

NEW

4-inch thermal transfer industrial printer



iX4-280



Durable printhead for logistics label printing

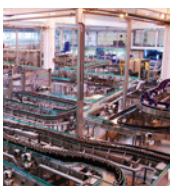


Design to fulfill automatic labeling demands in emerging markets

Application



Automatic labeling



Manufacturing



Transportation & Logistics



Product features



Optimized mechanical structure

Optimized mechanical structure design can reduce vibration effectively. Offers excellent quality during high-speed printing.



Flat panel structure

The flat panel structure shortens the peel-off distance. Keep automatic labeling machine running smooth.



Durable printhead

New printhead has high stability and quality, suitable for automatic labeling & logistics applications.



High printing speed

The maximum printing speed can reach up to 10ips. (254mm/s) (with peeler and rewinder)

General Specifications

Print Specifications		iX4-280	
Printing Method	Direct Thermal & Thermal Transfer		
Printing Resolution	203 dpi (8 dots/mm)		
Printing Speed	Max. 10ips (254mm/s) (with peeler and rewinder)		
Printing Length	Max. 100"(2540 mm)		
Printing Width	Max. 4.13"(105 mm)		
Memory	128MB DRAM, 128MB Flash ROM (USB storage up to 32GB)		
CPU Type	32 bit RISC microprocessor		
Consumables Specifications			
Sensors	Reflective sensor x 1 (Movable) & Transmissive sensor x 1(Movable)		
Media Type	Roll-feed, die-cut, continuous, fan-fold, black mark, tags, ticket in thermal paper or plain paper		
Media	Max. width: 4.48"(114mm). Min. width: 1"(25.4 mm). Thickness: 0.0025"~0.01" (0.0635mm~0.254mm) 8"(203mm)OD on a 3"(76mm) ID core. Dealer Option 6"(152.4mm)OD on a 1.5"(38mm) ID core.		
Ribbon	Max. width: 4.4"(112 mm). Min. width: 1" (25.4 mm). Length:max 450m Wax, Max OD 3.2" (81.3 mm). Core size ID 1"(25.4 mm). Wax, Wax/Resin, Resin (Ribbon wound ink-side out or ink-side in: auto-detect)		
Fonts & Symbolologies			
Fonts	Internal character sets standard 5 alpha-numeric fonts from 0.049"H ~ 0.23" H (1.25mm ~ 6.0mm) Internal fonts are expandable up to 24x24 4 direction 0 ~ 270 rotation Soft fonts are downloadable Ability to print any Windows True Type font easily. Support scalable font		
1D Barcodes	PPLA: Code 39、UPC-A、UPC-E、Code 128 subset A/B/C、EAN-13、EAN-8、HBIC、Codabar、Plessey、UPC2、UPC5、Code 93、Postnet、UCC/EAN-128、UCC/EAN-128 K-MART、UCC/EAN-128 Random weight、Telepen、FIM、Interleaved 2 of 5 (Standard/with modulo 10 checksum/ with human readable check digit/ with modulo 10 checksum & shipping bearer bars)、GS1 Data bar (RSS) PPLB: Code 39、UPC-A、UPC-E、Matrix 2 of 5、UPC-Interleaved 2 of 5、Code 39 with check sum digit、Code 93、EAN-13、EAN-8 (Standard, 2 /5digit add-on)、Codabar、Postnet、Code128 subset A/B/C、Code 128 UCC (shipping container code)、Code 128 auto、UCC/EAN code 128 (GS1-128)、Interleave 2 of 5、Interleaved 2 of 5 with check sum、Interleaved 2 of 5 with human readable check digit、German Postcode、Matrix 2 of 5、UPC Interleaved 2 of 5、EAN-13 2/5 digit add-on、UPCA 2/5 digit add-on、UPCE 2/5 digit add-on、GS1 Data bar (RSS)		
2D Barcodes	PPLA/PPLB:MaxiCode、PDF417、Data Matrix (ECC 200 only)、QR code、Composite Codes		
Graphics	PPLA: PCX, BMP, IMG, HEX, GDI PPLB: PCX、BMP, Binary raster, GDI PPLZ: PCX, BMP, IMG, Hex, GDI, Binary raster		
Emulation	PPLA, PPLB, PPLZ		
Interface Characteristics and Integration			
Operation Interface	LED indicator x 3, Button x 3, LCD Display x 1		
Communication Interface	USB device, RS-232, Ethernet, USB host x 2		
Real Time Clock (RTC)	Standard		
Drivers	Windows Driver for Windows Vista/Win7/Win8/Win10, LINUX Driver, macOS Driver, Raspberry Pi Driver		
Software	BarTender, Printer Tool, Font Utility		
Database Link	Argobar Pro support ODBC Database Connection: Excel, CSV, MS Access, MS SQL, Oracle MySQL, dBASE (*.dbf)		
Operating & Environment Characteristics			
Power Source	Internal Universal Switching Power supply. Input voltage: 100~240V, 50~60Hz		
Operation Environment	Operation Temperature: 40°F~104°F (4°C~40°C), 5% ~ 90% non-condensing Storage Temperature: -4°F~122°F (-20°C~50°C)		
Agency Listing	CE, CB, FCC, cULus, BSMI, RoHS		
Physical Characteristics			
Printer Dimensions	W 250 mm x H 260 mm x D 405 mm		
Printer Weight	29 lbs (13 kg)		

*Argox reserves the right to enhance and modify the specification without prior notice.
Please check Argox sales representative for most updated specifications.

Optional Items



Cutter



Peeler



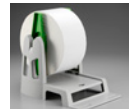
GPIO



Internal rewinder



External rewinder



External media stand



ACRC
ARGOX Certified Repair Centers

Consult your local Argox business partners for location and contacts.



Argox Information Co., Ltd.

8F., No. 28, Baogao Rd., Xindian Dist., New Taipei City 231029, Taiwan (R.O.C.)
Tel: +886-2-8912-1121 Fax: +886-2-8912-1124 <https://www.argo.com> <https://www.youtube.com/user/argoxmkt>
Copyright © 2024. Argox Information Co., Ltd. All Rights Reserved.